

Welcome to IX[®]



IMPLEMENTATION
ENGINEERS[®]
BEYOND CONSULTING

It All Started in 1963 . . .

Our journey began in 1963 as Ingersoll Engineers, a subsidiary of Ingersoll Milling Machine Company, to support product installation globally. Ingersoll Engineers provided technical support along with industrial and production engineering expertise to install and integrate Ingersoll's large industrial equipment into existing and new manufacturing operations.

Over the decades, our capabilities have evolved and expanded dramatically, encompassing every facet of operational excellence. Today, through our proprietary Implementation Execution (IX®) approach, we deliver sustainable, high-impact solutions across plant and product design processes, Lean manufacturing, supply chain optimization, quality systems, maintenance strategies, people and leadership development, Industry 4.0 technologies, and Artificial Intelligence (AI) integration across the business value stream.



What is IX® ?

IX® is Implementation Execution. It is our proprietary Implementation service offering that allows us to bring exceptional value to our clients.

Crafted From Results

IX® is the result of more than 60 years of our teams working with our clients to create sustainable results.

Overcome Execution Barrier

Implementation Engineers has 60 years of operational Implementation Execution experience and a long history of helping clients realize transformational execution.

We Partner With Your People

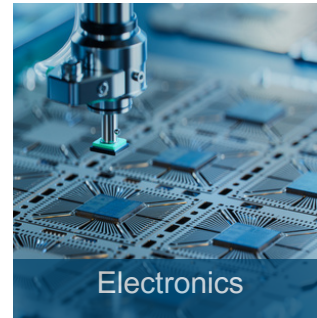
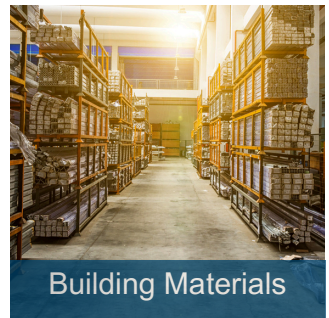
Our proprietary Implementation process unlocks resident skills, experience, knowledge, and capabilities of your organization's people to achieve sustainable value.

Client Knows the Gaps

IX® is not consulting or advice based. Advice does not generate results. The difference is that our clients know what needs to be done. We work with business leaders who see operational gaps with meaningful value and our IX® services deliver that value.



IX® Across Industries



IE is not a consulting or advisory firm

We do not do Implementation Consulting

We do Implementation Execution. IX® was developed from more than 60 years of our teams working with our customers to create sustainable results

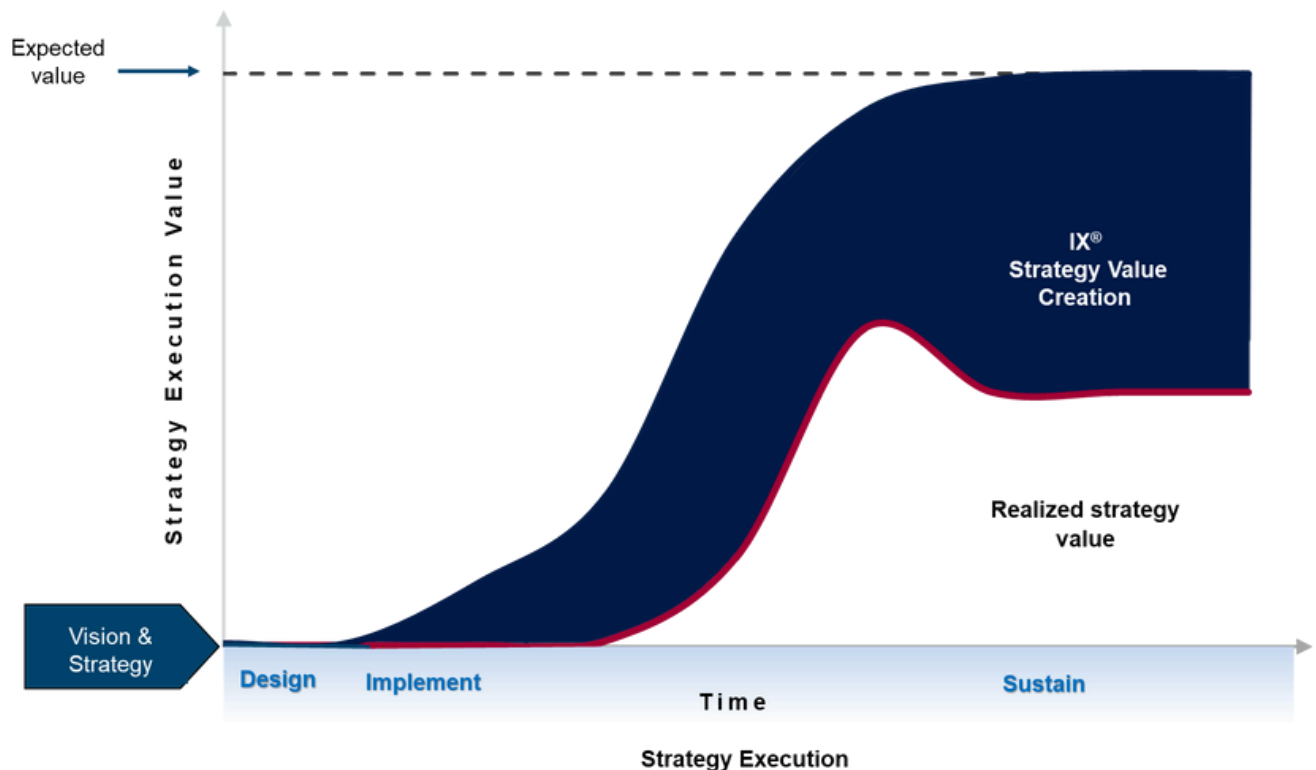


IX® Accelerates Vision & Strategy Value Creation

Implementation Engineers is not a consulting or advisory services firm. We are an Implementation Execution (IX®) services company dedicated to helping our clients accelerate value creation through the implementation of Vision and Strategy. Research has shown that a significant 90% of strategic initiatives fall short of achieving their intended value. At Implementation Engineers, we are here to assist leaders who recognize gaps in their implementation capabilities that are crucial for realizing the full potential of their business vision and strategy. By streamlining the strategy design process from months or years to mere weeks, we enable faster implementation. Our approach involves leveraging enCompass®, our structured, disciplined, and sustainable implementation methodology, to ensure successful implementation. Our core value proposition is centered around expediting the realization of Vision and Strategy, resulting in sustainable achievement of expected value.

Our Value Proposition

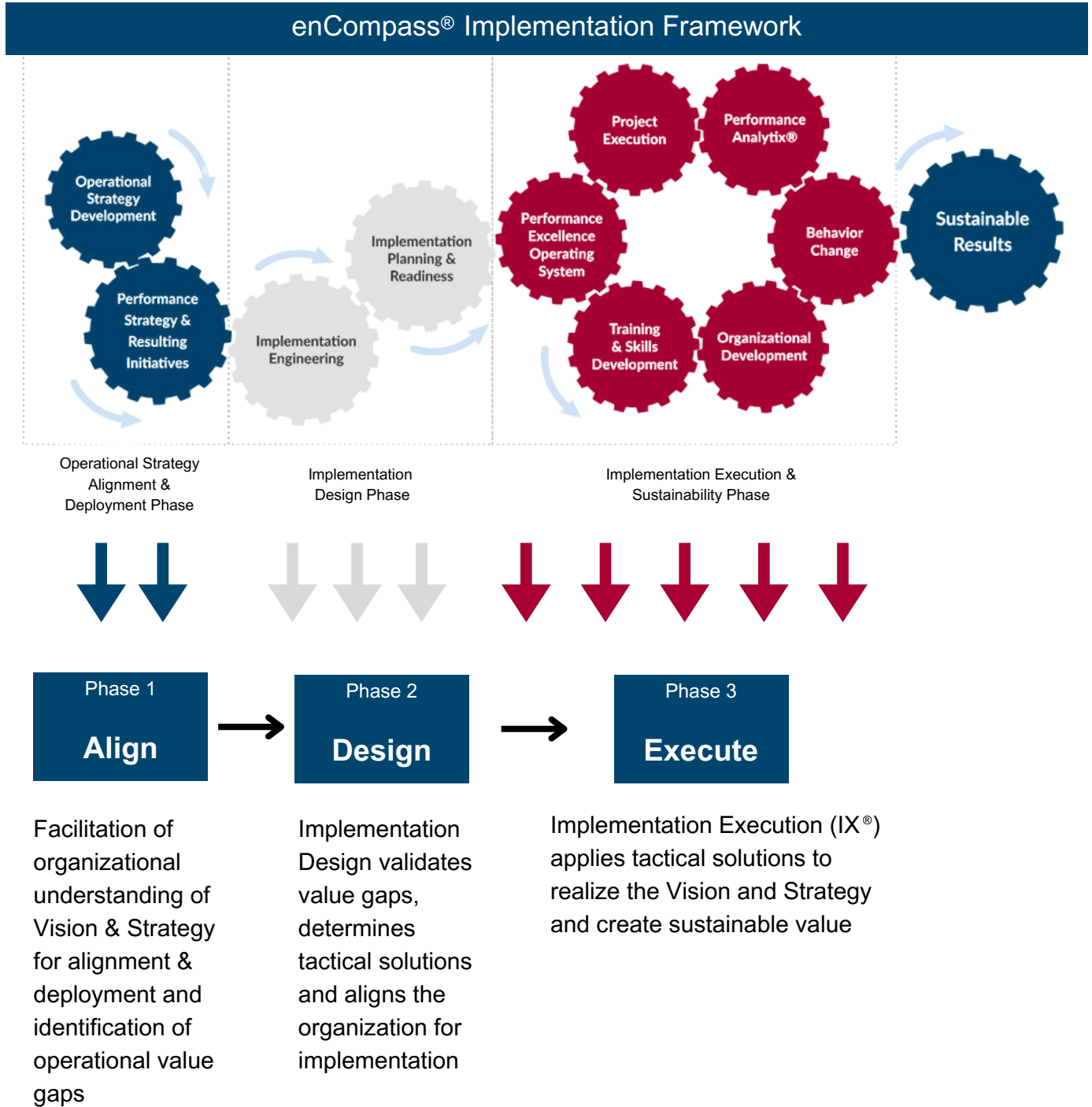
Implementation Engineers reduces the time to enhanced EBITDA by leveraging our proven enCompass® implementation methodology to accelerate value creation.



*Roughly 70% - 90% of companies don't realize the full value of their improvement initiatives and strategies (Source: Grok: McKinsey & Bain)

IX® Supports Vision & Strategy Implementation at 3 Phases

While Implementation Engineers is not a strategy firm, we collaborate with leaders to enhance strategic thinking and assess the feasibility of implementing various strategies to achieve expected value. Our enCompass® framework offers a comprehensive Align-Design-Execute model to drive value realization. In contrast to traditional approaches, we advocate for a bottoms-up value creation process where each improvement is valued, and the collective impact of these solutions forms the expected value. Leveraging cutting-edge i4.0 principles throughout the value stream, we implement improvements and evaluate the necessary skills and behaviors essential for sustained value realization.



Align & Design Phases Happen Fast

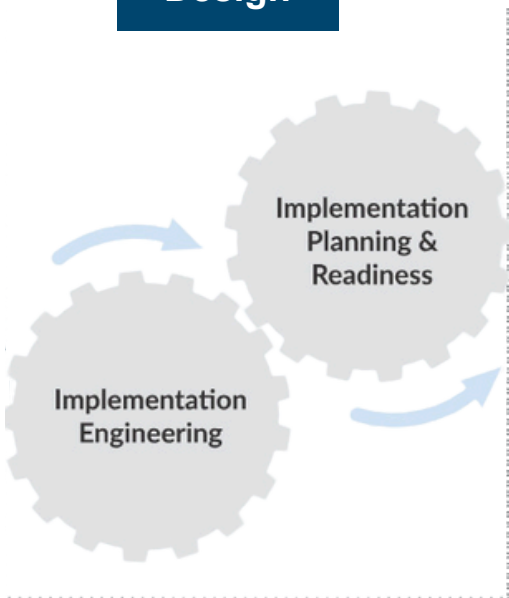


When every person in a business understands the Vision & Strategy of the business and understands their role in making it happen - then good things can happen for the business. When there is misalignment, organizational energy is spent on things that may not create value. This phase of work ensures that all levels of the organization understand the journey and how they can contribute.



IE works across the business value stream to align people to the value creation journey.

Phase 2 Design

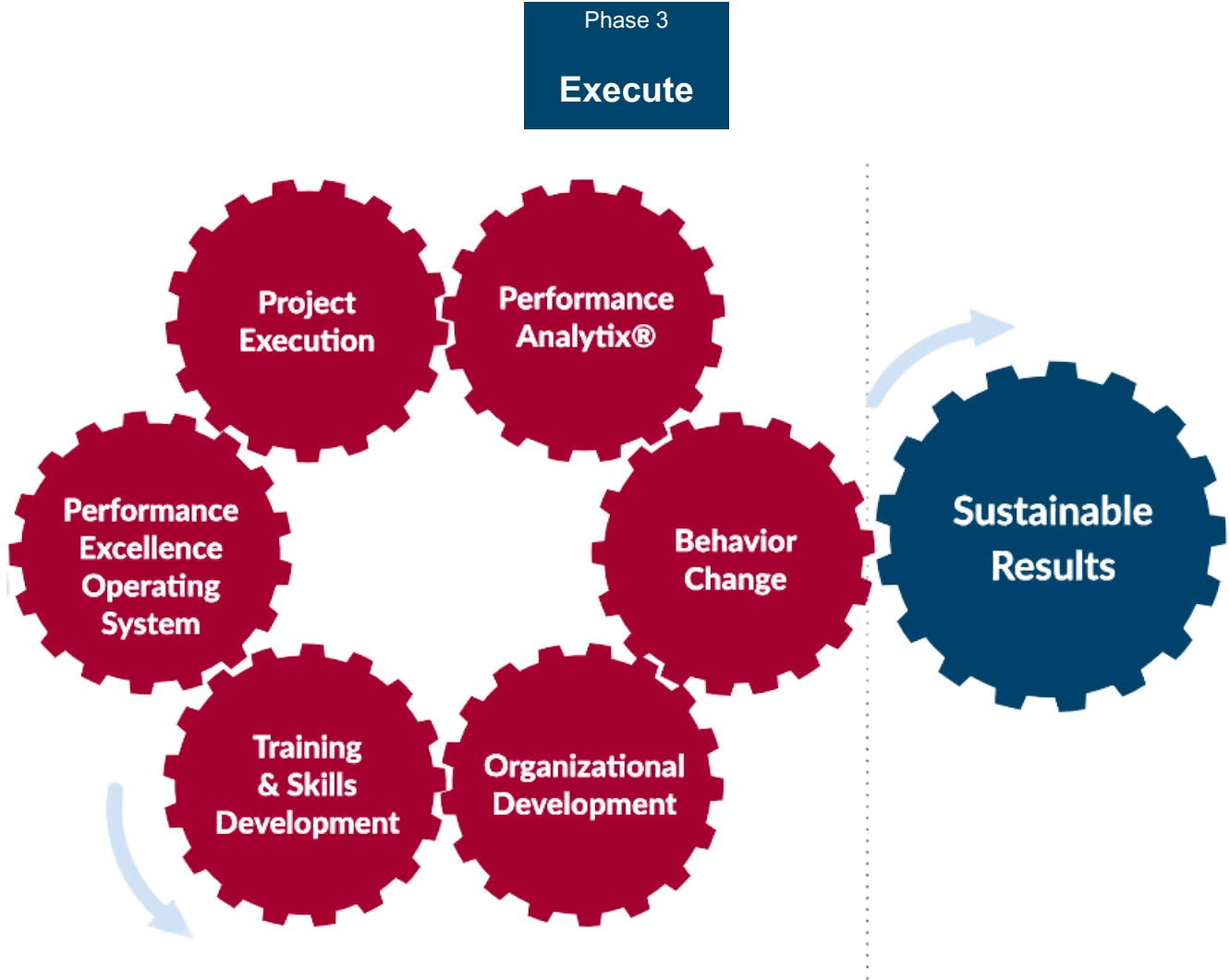


IE Designs Strategic Solutions At Three Levels:

- Transformational Strategies - IE designs value added solutions across the entire business value stream
- Functional & Cross-Functional Strategies - IE focuses on key functional areas to design value added solutions
- Focused Strategies - IE focuses on acute solutions within a functional area to solve complex problems hindering performance to accelerate bottom line results

IE makes operational strategy granular so your people can see it, they know what it is worth, when it can be done and what their role is in getting strategy executed.

IX® Delivers Sustainable Results



These gears represent the heart of our IX® service offering. We leverage the resident knowledge, skills, capabilities and experience of your people to accelerate the implementation of the operational solutions identified across the value stream to create value. We execute the solutions, develop the organization, train and skill people, identify and measure key performance analytics, integrate solutions into your management operating system, and measure behavioral change to ensure sustainability.

enCompass®, IE's proprietary implementation framework, creates complete transparency - there is no place to hide in terms of results.

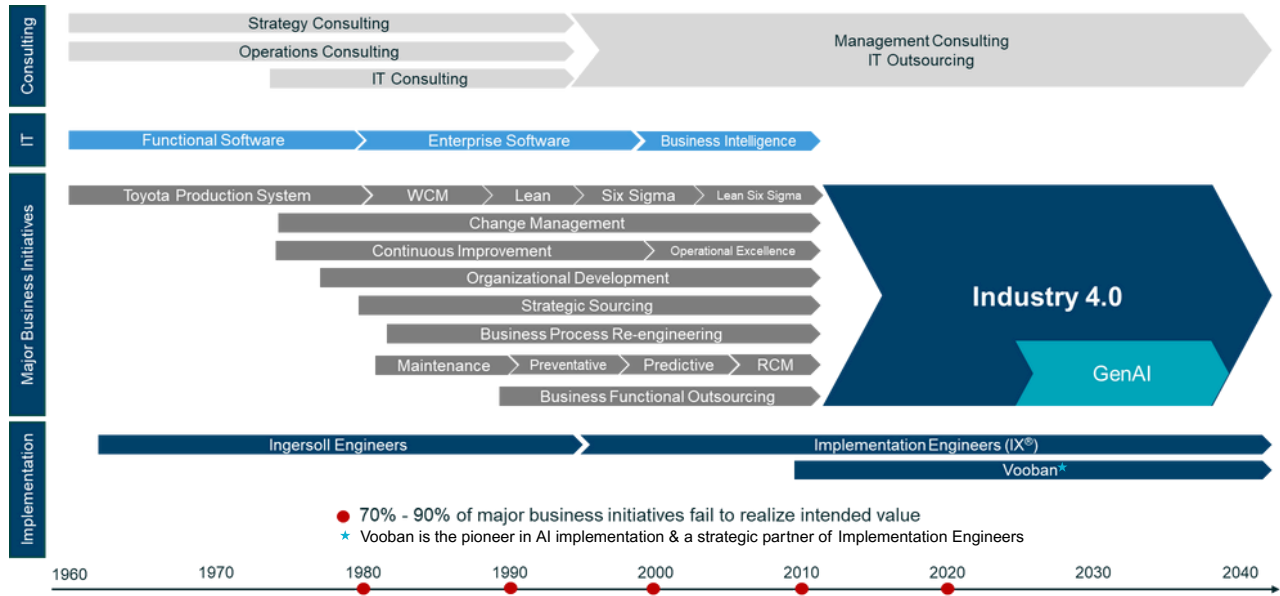
IX® Makes Vision & Strategy Granular

Our Implementation Execution (IX®) service offering represents a groundbreaking paradigm for business leaders. Setting us apart from traditional consulting and advisory firms, we offer a distinctive, high-value approach. Rather than investing significant time in developing all-encompassing, complex solutions that necessitate widespread changes across the business value chain, we streamline implementation complexity by pinpointing the pivotal areas within your business value stream. These key solutions are the driving force behind value creation, as opposed to the multitude of less impactful solutions.



IE implements value creation across the business			
Engineering	Asset Footprint	Supply Chain	Operations
<ul style="list-style-type: none"> Robust design Engineering change management Time to market Launch readiness 	<ul style="list-style-type: none"> Plant layout Product line moves Consolidations Integrations 	<ul style="list-style-type: none"> Network optimization Sales, Inventory & Operation Planning (SIOP) ERP optimization Master data management Demand management & forecasting Capacity planning Supply chain process re-engineering Planning & scheduling Plan for Every Part (PFEP) Inventory optimization Warehouse flow Material shortage reduction Distribution logistics 	<ul style="list-style-type: none"> Throughput Management Operating System Automation Inventory optimization Waste reduction OEE Asset footprint Big Data Line start & production ramp Material flow Training & skills development Cost reduction Capital projects Quality systems
Maintenance & Reliability		Quality	Warehouses & Distribution Centers
<ul style="list-style-type: none"> Asset management system development Maintenance work management CMMS master data management Operator driven reliability Reliability engineering MRO materials management Reliability Centered Maintenance (RCM) Failure Modes Effects Analysis (FMEA) Asset integrity diagnostics Mechanical integrity programs PM evaluation / optimization Condition Based Maintenance (CBM) / Predictive technologies Root cause analysis Asset criticality analysis Maintenance Management Operating Systems Asset Performance Excellence Organizational Effectiveness Shutdown / turnaround improvement 		<ul style="list-style-type: none"> Zero defects Six Sigma Design of Experiments Scrap / rework RCCA / problem solving 	<ul style="list-style-type: none"> Asset network Asset footprint Demand fulfillment Levels of automation Technology roadmap
Industry 4.0 & AI		Management Operating System	Organizational Effectiveness
<ul style="list-style-type: none"> Factory 4.0 design and deployment Digital maturity assessments and roadmaps Performance dashboards with coaching Predictive and prescriptive analytics AI-powered demand forecasting AI-driven anomaly detection Generative & Agentic AI for process optimization AI-enhanced quality inspection and defect detection AI-optimized production scheduling Data collection and machine monitoring Digital work instructions Connected worker applications Automation strategy and management Cobot design and implementation Condition-based monitoring 		<ul style="list-style-type: none"> Short Interval Control / Plan-Do-Check-Act Cycles Meeting Effectiveness Uptime Improvement Turnover Resiliency Information-Driven Decision Making Improved Problem Solving Operator Accountability Proactive Supervisor Management Reduced Firefighting Visual Management Supervisor Effectiveness Change Management & Sustainability Workforce Training & Development Lean / Six Sigma / Problem Solving Training Cultural Enhancement 	<ul style="list-style-type: none"> Strategic alignment Best-fit organizational analysis & design Levels of work & decision making Accountability mapping Working relationships Manpower planning Capability High performance behaviors Training & coaching Surveys Managing change
			Implementation University
			<ul style="list-style-type: none"> Problem solving Lean Six Sigma Roles & responsibilities Functional training Change management Business process training Organizational development Custom training

Industry 4.0 is the Mother of All Initiatives

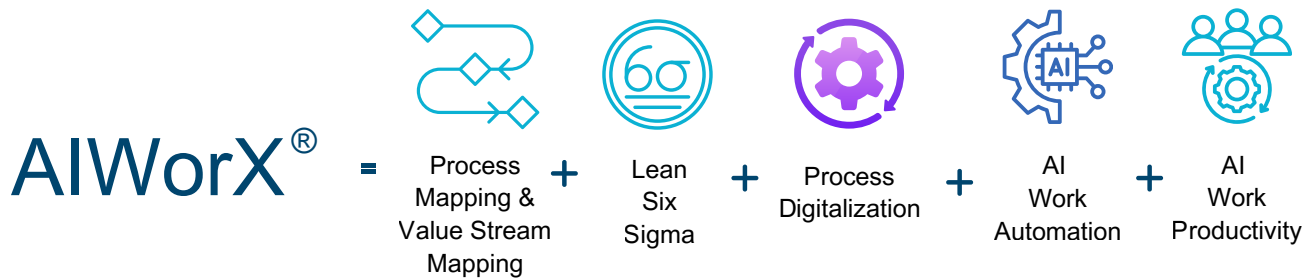


For decades, visionary consulting firms and academics have introduced transformative business initiatives to improve performance and competitiveness. From the Toyota Production System (TPS) and World Class Manufacturing (WCM) to Lean Thinking, Six Sigma, and Operational Excellence, each wave of innovation has raised expectations for operational excellence.

Today, Industry 4.0 and generative artificial intelligence represent the most ambitious evolution yet—bringing advanced analytics, automation, and digital intelligence directly into the core of operations.

Yet despite increasingly powerful tools, one reality has remained constant: **70–90% of major business initiatives fail to fully realize their intended value.**

The barrier has never been vision. It has been execution.



AIWorX® is Implementation Engineers’ proprietary AI implementation methodology—designed to cut through complexity and rapidly identify where AI and advanced analytics will drive real, measurable operational value.

Built on decades of operational experience, AIWorX® integrates proven methods with cutting-edge digital tools to ensure AI is embedded into how work actually gets done.

Implementation University Trains and Skills Your People and Teaches Your Teams How to Fish

Implementation Engineers' Implementation University ensures your teams get the training and development while we provide IX® services to sustain all aspects of the work.



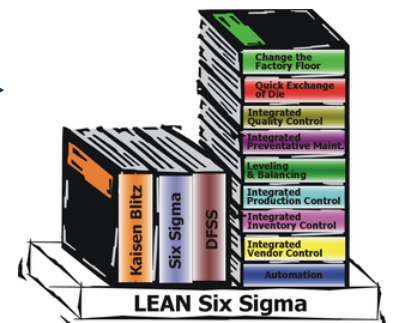
IX® unlocks your team's knowledge, skills, capabilities, and experience to:

Solve challenging problems

Understand and manage complex change

Learn and apply problem-solving tools like Lean and Six Sigma

Coach others to adapt to new ways of thinking and working



Let's Turn Your Vision & Strategy into Results

At Implementation Engineers, we don't just execute projects - we transform your vision into operational reality. Our proven 3-phase approach - **Align, Design, Execute** - delivers lasting value, from aligning your team on strategic goals to optimizing operations and driving measurable outcomes. Whether you're aiming to lead your market, boost efficiency, or maximize shareholder value, we're here to make it happen, step-by-step, side-by-side.

Ready to Get Started?

Let's explore how we can bring your vision to life. Contact us today to schedule a conversation. Together, we'll chart the path to your success.

Scan Me



Or visit www.bit.ly/ImplementationEngineersIntro

Learn More: www.implementation.com

